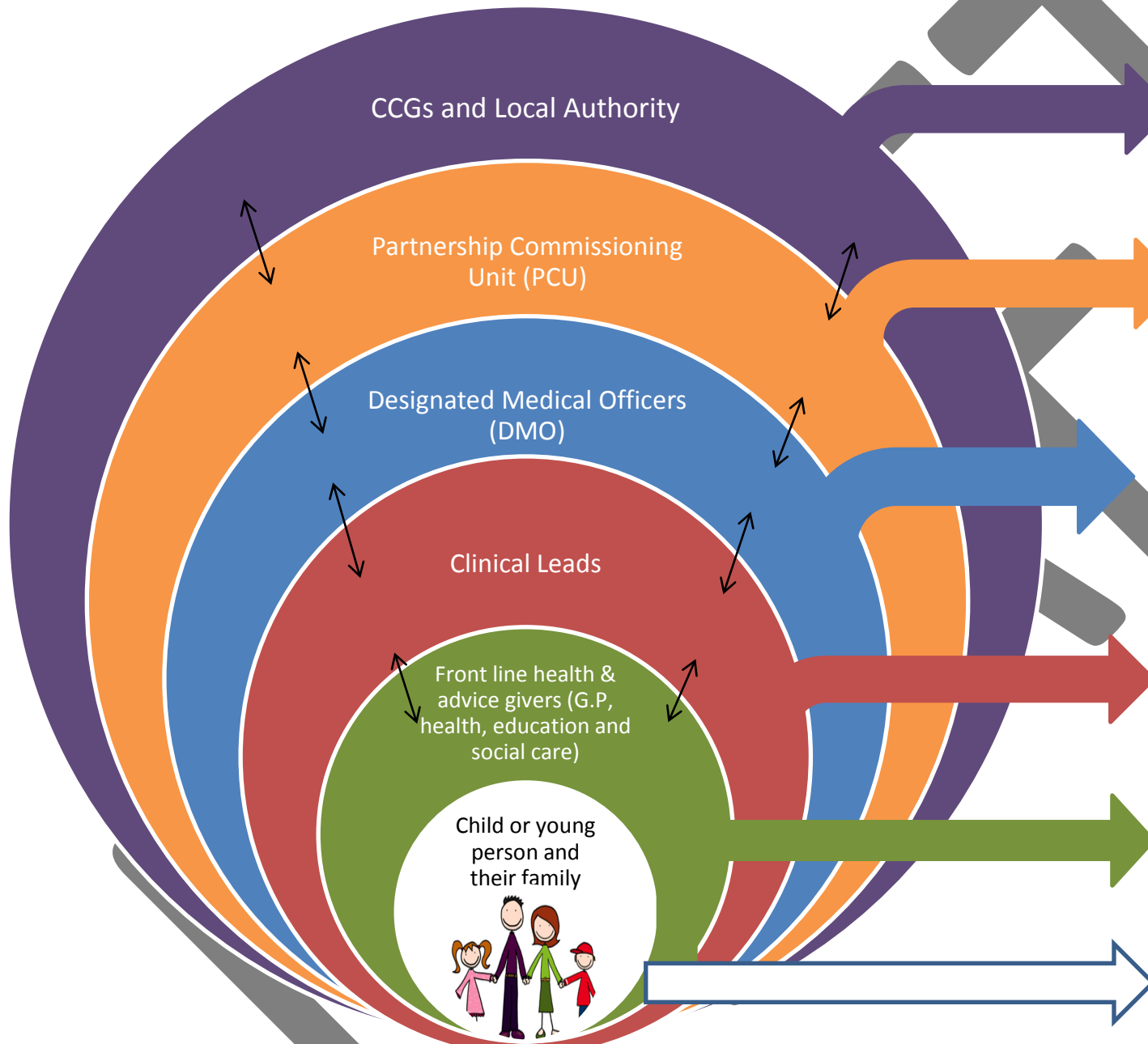


Supporting Children and Young People with Special Education Needs and Disabilities (SEND). A Child/Young Person Centred Network of Support (Draft)



Local Authority are responsible for bringing together support from education, health and social care services for children with SEND. The CCG are responsible for commissioning local health services to meet the needs of children and young people with SEND.

The Partnership Commissioning Unit (PCU) are commissioned by the 4 North Yorkshire CCG's to support CCG's in meeting their statutory responsibilities. They act as a link between CCG's, Local Authority and Providers

The DMO provides strategic oversight and assurance and supports the CCG in meeting its statutory responsibilities. They are the point of contact for local authorities, schools and colleges seeking health advice on children or young people who may have SEND.

Clinical leads provide an overview of specialist input into co-produced care planning. They are specialists in their fields and ensure that front line 'advice givers' are mobilised to provide involvement in multidisciplinary meetings to co-produce EHC plans.

All front line advice givers involved with the child or young person are expected to cooperate with Local Authority to determine whether an Education, Health and Care Plan is needed and provide input and advice to the care planning process.

Children and young people and their parents or carers are fully involved in decisions. Aspirations for children are raised through an increased focus on life outcomes.