

## **York Hospital - Medical Same Day Emergency Care (SDEC)**

### **Humber and North Yorkshire ICS**

#### **In Hospital Care | Direct Access Hospital Units**

##### **York Hospital Medical SDEC**



5 days a week (Monday – Friday)

08.00-18.00: phone call not required\*, unless IPC risk

18.00-08.00: call ahead to discuss/agree referral

2 days a week (Saturday-Sunday)

09:00 – 15:00 phone call not required\*, unless IPC risk

15.00-09.00: call ahead to discuss/agree referral

York SDEC now located at Ward 24, Junction 5, 2nd floor.

\*\*\*See changes to referral process and criteria below\*\*\*



SDEC Direct Line: 01904 726024 (to call first before bed managers)



Bed Manager: 01904 725986

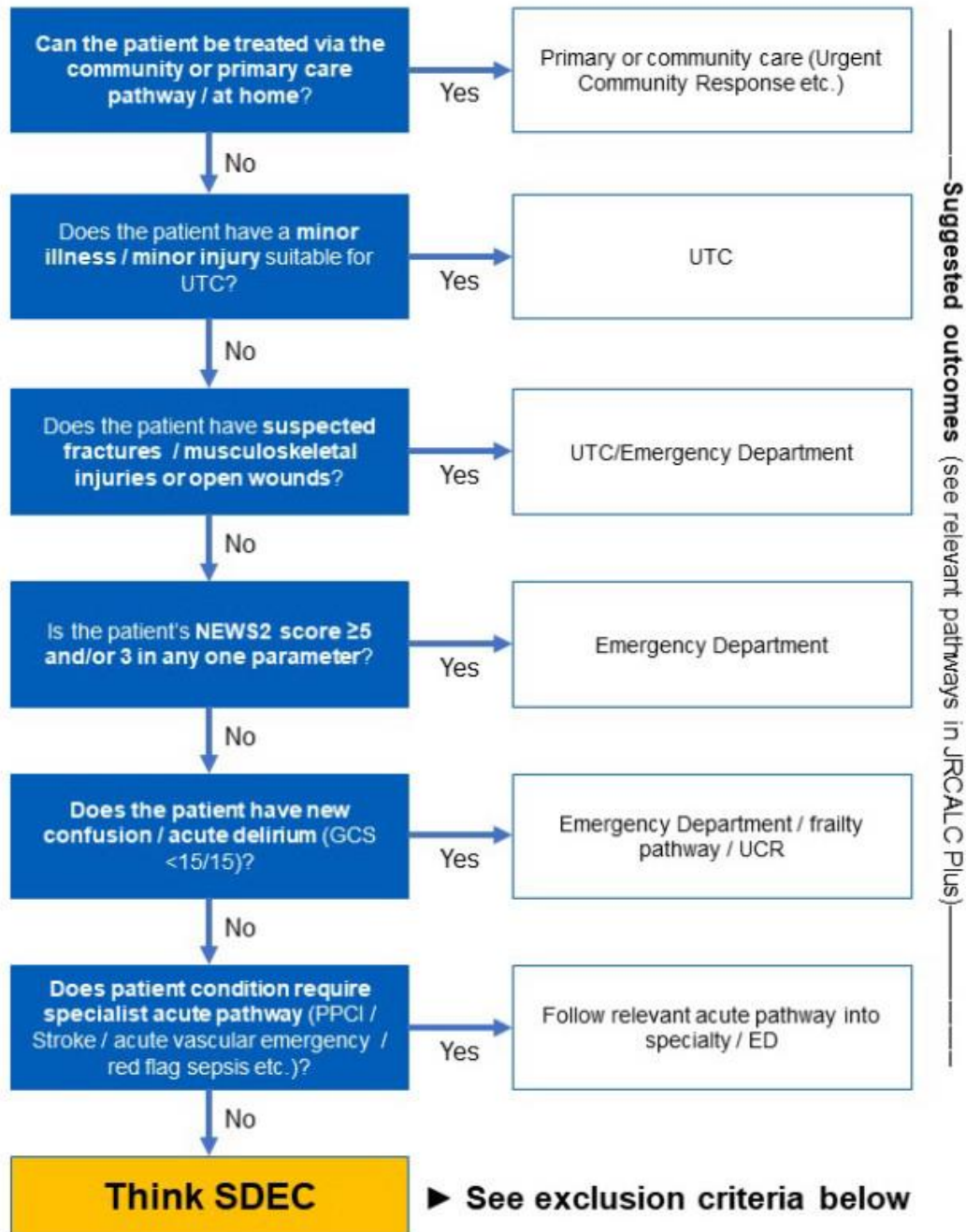


SDEC Consultant: 01904 721247



The York Hospital (YDH) Wigginton Road York YO31 8HE

# Humber and North Yorkshire Standardised Medical SDEC criteria



---

### Inclusion criteria

- NEWS score <5 and/or 3 in one parameter, and age 18+
- A medical condition is the primary working impression (ie. no trauma/surgical/urology/ENT problems etc.)
- All medical patients will be considered for SDEC unless meeting exclusion criteria
- All GP/Primary Care referrals which meet criteria
- See below for additional criteria for patients with chest pain

---

### Exclusion criteria

#### GENERAL EXCLUSIONS

- Not suitable for management via primary care or community pathway
- Trauma/surgical/gynae presentations
- NEWS2 score  $\geq 5$  and/or 3 in any one parameter
- Acute mental health crisis
- Intoxicated (alcohol/drugs)
- Requires isolation
- New oxygen requirement
- Active bleeding
- Requires specialist pathway (stroke, STEMI, vascular etc.)
- Confirmed diagnosis where admission is required

---

## CHEST PAIN EXCLUSIONS

- Sudden onset of severe or ongoing pain
- Acute ecg changes
- Pain occurring with minimum exertion
- Pain lasting longer than 15 mins
- Nausea/vomiting/sweating/syncope
- Pain radiating to left arm/jaw/back



## Referral Process

- In-hours, if patient meets criteria, bring patient straight to Medical SDEC - no phone call
- Out-of-hours, call unit to discuss/agree referral before conveying
- Medical SDEC is located at Second Floor, Junction 5 at YDH
- If patient has any infective symptoms that require isolation, but otherwise meets criteria, call to discuss
- If conveying directly to the unit, please record in ePR under Clinical Outcome > Meets criteria for hospital conveyance > SDEC York Medical > Accepted
- If SDEC then decline to accept patient at point of handover, amend ePR Clinical Outcome screen to say referral Declined and add notes in comment section



## Notes

SDEC is the provision of same day care for emergency patients who would otherwise be admitted to hospital.

Under this care model, patients presenting at hospital with a suspected medical condition not suitable for referral elsewhere when in the community can be rapidly assessed, diagnosed, and treated without being admitted to a ward, and if clinically safe to do so, will go home the same day their care is provided.

Consider Medical SDEC first, no pathways, using the standardised exclusion criteria above.