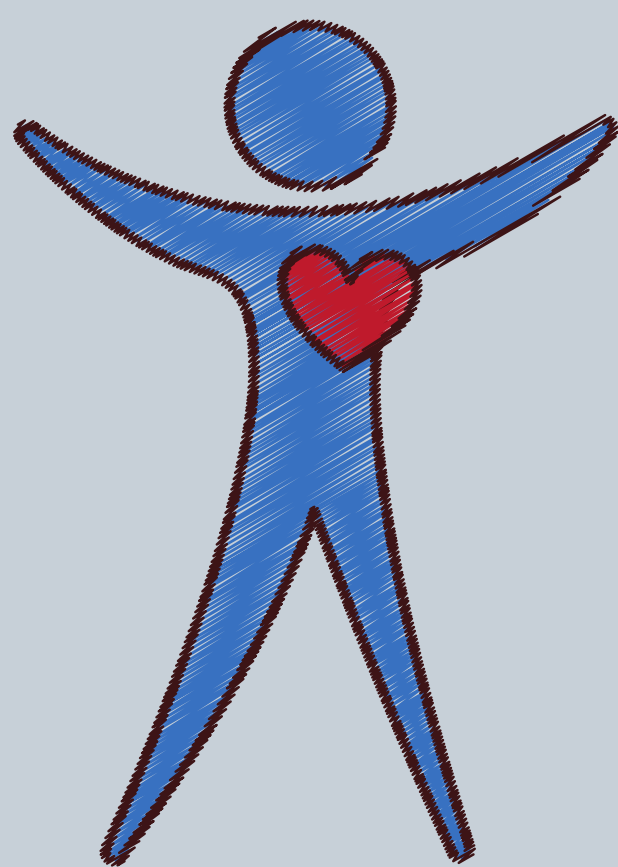


# What is a Primary Care Network (PCN)?

Primary Care Networks (PCNs) bring general practices together to work at scale and focus on delivery, to provide a wide range of services to patients in a coordinated way.



This includes social care, health, community and voluntary services, integrated advice and guidance services.



Six PCNs have successfully been formed in the Vale of York, all practices are included and there is a clinical director/s appointed for each.

## Your PCN is...

### Selby Town

It includes the area area to the south west of the Vale of York and the main town of Selby and close surrounding villages and - this means the PCN covers:

**49,792**

people

**180**

miles

**4**

practices

Selby Town PCN Priorities include:

- Frailty, mental health, dementia, long term conditions
- Obesity, smoking cessation, learning disabilities

Selby Town PCN is led by:

Dr Nick Jackson  
Clinical Director and GP Principal  
at Beech Tree Surgery, Selby