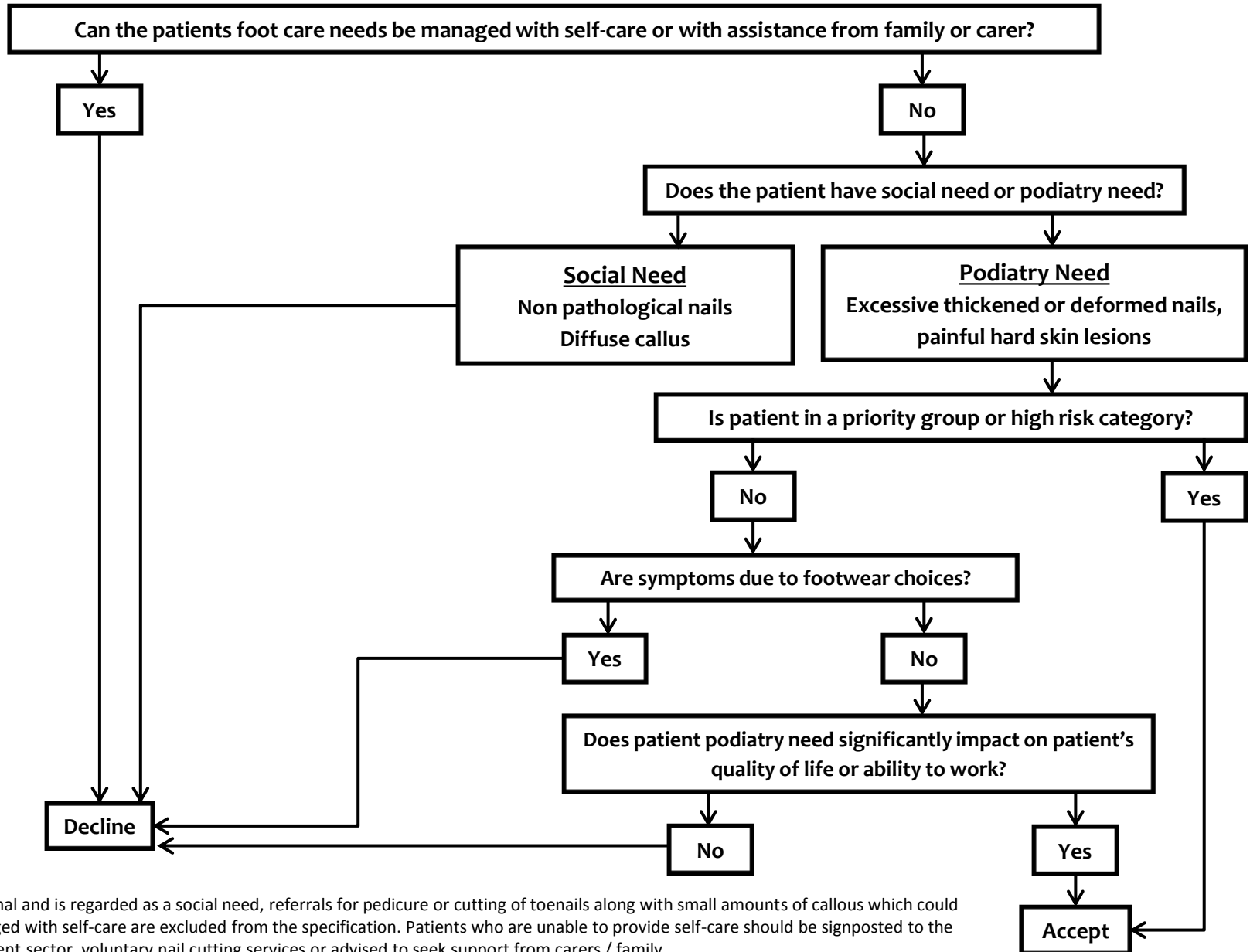


# Podiatry Decision Tree – Community Triage and Assessment



Nail growth is normal and is regarded as a social need, referrals for pedicure or cutting of toenails along with small amounts of callous which could normally be managed with self-care are excluded from the specification. Patients who are unable to provide self-care should be signposted to the private / independent sector, voluntary nail cutting services or advised to seek support from carers / family.