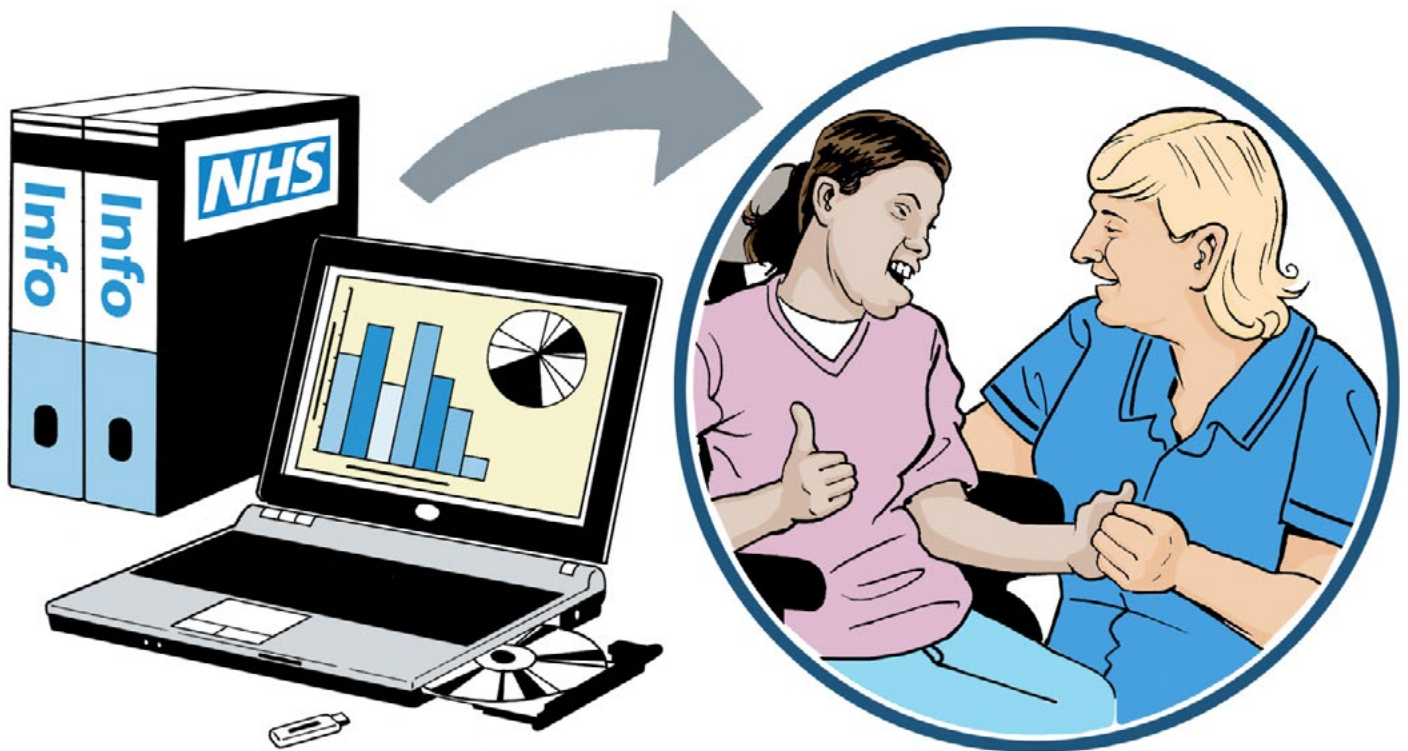


What is Assuring Transformation?



Easy Read



We made this leaflet for people with a learning disability, autism or both who are in hospital.



This leaflet is also for families and carers.



This leaflet tells you how NHS England puts information together to give better care for people with a learning disability, autism or both.

About NHS England



NHS
England

NHS England is a national organisation that helps people in England to have better health.



NHS England puts patients and the public at the centre of everything we do.



NHS England works with other health and care organisations to help them make good decisions and give everyone high quality care.

NHS
England



Part of our job is to look after services for people with a learning disability, autism or both.

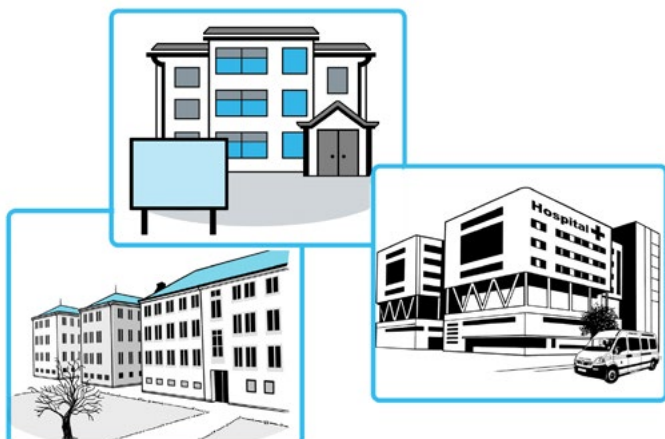
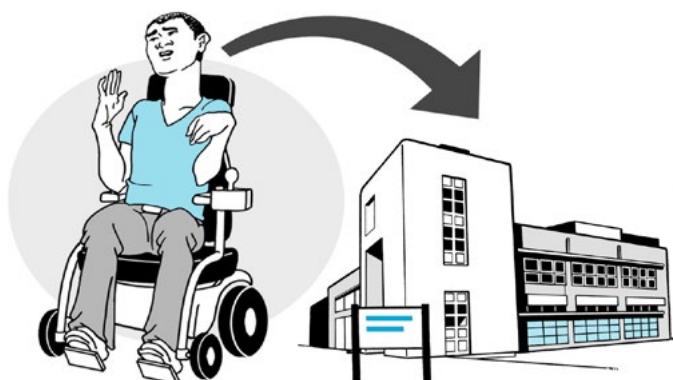
What is Assuring Transformation?



“Assuring Transformation Data” is information about people with a learning disability, autism or both who are in hospital.

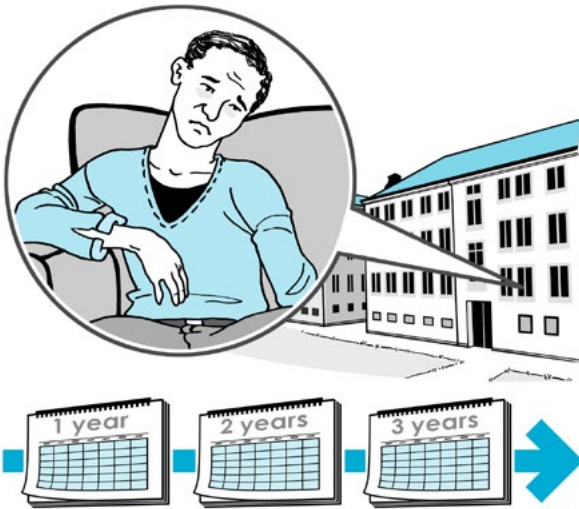
Assuring Transformation Data includes:

- The number of people with a learning disability, autism or both getting care in a hospital
- How many people are going into hospital each month
- The type of hospital they are in

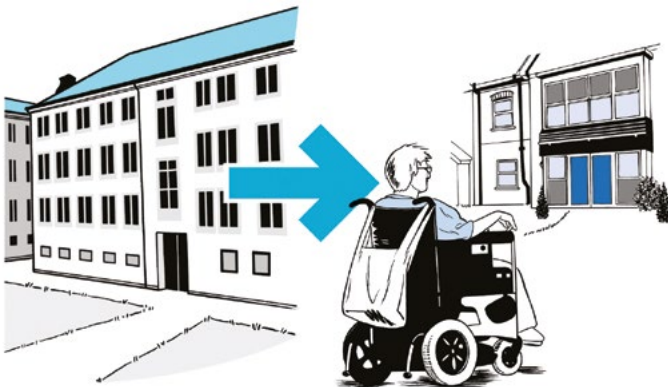




- When their care and treatment is checked



- How long they have been in hospital

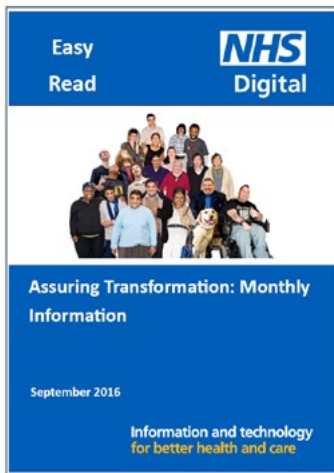


- How many people have moved from hospital to the community



NHS digital collects Assuring Transformation data from commissioners each month. Commissioners are people who plan and pay for health services.

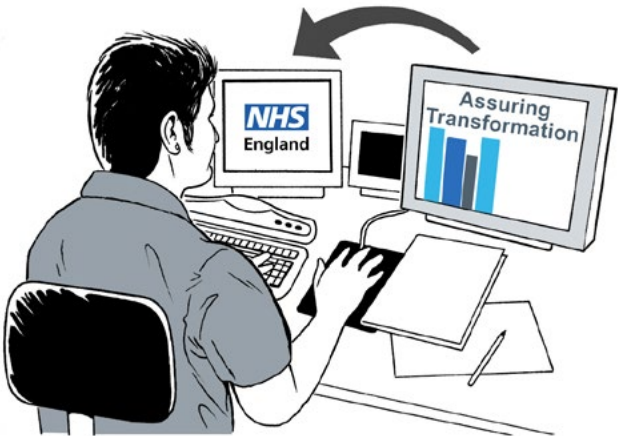
How do we use Assuring Transformation data?



Every month, NHS Digital gives the information to NHS England. They also publish a monthly progress report.



The progress report lets the public check if the NHS is doing a good job of looking after people with a learning disability, autism or both who are in hospital.



NHS England is in charge of putting Assuring Transformation data together.



We use this information to check that people with a learning disability, autism or both are getting the right care in the right place.



We also use the information to make sure people are not in hospital if they would be better looked after in the community.

Protecting people's information



It is important that Assuring Transformation has information about all patients with a learning disability, autism or both getting care in a hospital. This way, we can be sure that all patients are getting the right care in the right place.



When NHS digital publishes progress reports they include important information about what is happening all across England and also in different parts of England.



The progress reports don't have any personal information, like names, birthdays or NHS numbers.



NHS digital and NHS England make sure patients' confidential information is protected so that nobody could work out who the progress reports are talking about.

Can people say no to sharing information about their care?



Yes. The patient, a family member or a carer can say 'no' to sharing information about their care with NHS Digital.



People who do not want details about their care to be put in the Assuring Transformation need to tell their commissioner (the person who pays for their care).

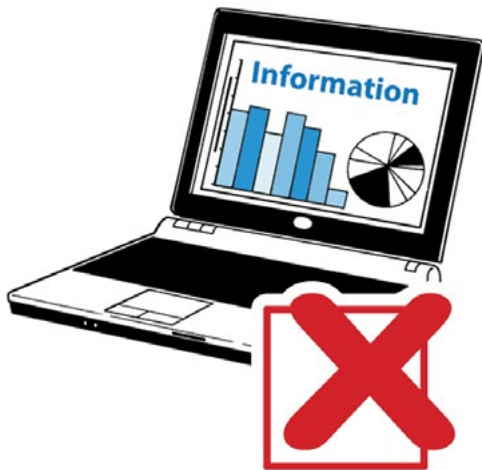


The commissioner will get in touch with the patient, their carer or their family member to talk about this.



If you would like support to say 'no' to sharing your information you can talk to a family member, an advocate or a self advocacy group.

Who to Contact



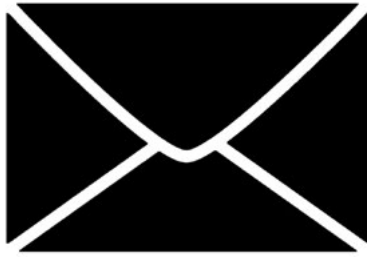
This is who you need to tell if you do not want NHS Digital to collect information about you or someone you care for.



Name of commissioner

Phone number





Mailing address



Email